



# PTL-SL Installation Guide

The PTL-SL ("Slide-Lock") is easily installed in four simple steps - this guide will ensure the lock is properly installed for maximum protection.

- ① Take two of the cable plates and place one on the body of the printer and one on the paper tray. Mark the location of the cable plates with a pencil and ensure the padlock will fit between the plates.



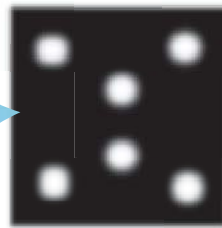
Notice how the plates are positioned too far apart for the lock to close.

- ② Clean the black rubber pads on the PTL-SL as well as the mounting locations on the printer with the provided alcohol wipes. Be sure to thoroughly clean all surfaces and allow them to fully dry before proceeding.



- ③ Apply 6 to 7 drops of the provided cyanoacrylate glue to each black rubber pad on the Side Lock. Carefully position the Side Lock plates on the printer within the pencil marks previously drawn and apply steady, firm pressure for 100 seconds.

Apply glue to each black rubber pad



- ④ After applying pressure for 100 seconds, allow the Side Lock plates to cure for 24 hours. (Do not attach padlock during 24 hour cure time.) In order to achieve maximum strength it is important that no one touch the plates during the curing time.



The padlock is not attached to the cable plates for the 24 hour cure time.